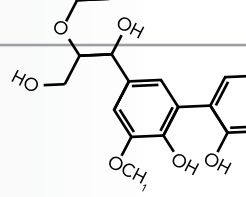


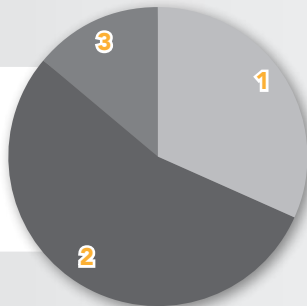
# A New Category of Impression Material VPES™ - A Breakthrough Technology



## Key Concern in Taking Consistent and Accurate Impressions

#1 Concern When Taking An Impression Involving Sub-gingival Margins<sup>1</sup>

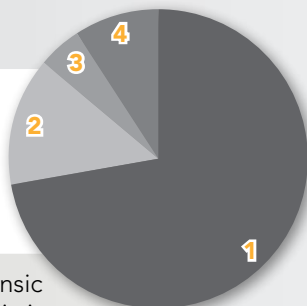
- 1) Controlling bleeding - 32%
- 2) Creating and maintaining space - 55%
- 3) Gingival trauma - 14%



**Solution:** The inherent hydrophilicity and wettability of VPES will enable you to capture the finer details of the tooth surface, even in a moist environment.

#1 Need for Improvement In Current Impression Materials<sup>1</sup>

- 1) Predictably flows sub-gingivally, minimizing voids and bubbles - 73%
- 2) Extended work times/faster setting times - 14%
- 3) Operator controlled work time/set time - 5%
- 4) Taste - 9%



**Solution:** EXA'lence™ combination of intrinsic hydrophilicity and excellent flow characteristics allow it to flow deep into the sulcus to capture detail and clear, crisp margins.

## VPES Vinyl PolyEther Silicone

### Problems and Solutions – Why VPES?

The rationale for the development of our new VPES material, EXA'lence, was simple and clear: to take you to a new level of distinctively predictable impressions.

### A Whole New Chemistry

EXA'lence combines the best features of both VPS and PolyEther, bringing elasticity, high tear strength, high hydrophilicity and excellent flow.

#### VPS

- 1) Variability in flow and thixotropic characteristics
- 2) All VPS materials rely on surfactants for wettability
- 3) Not intrinsically hydrophilic and does not always perform well in moisture - resulting in possible voids and loss of detail

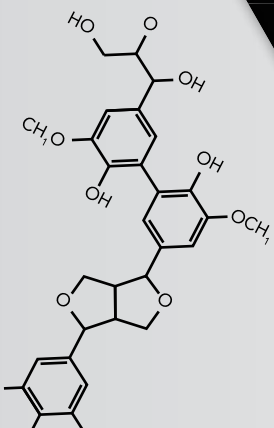
#### PolyEther

- 1) Has low tear strength
- 2) Poor taste
- 3) Need to use mixing machine or hand mix

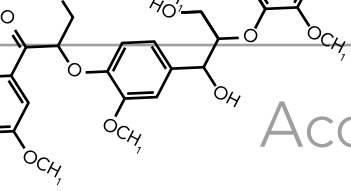
#### VPES

- 1) Intrinsically hydrophilic without surfactants
- 2) Handling of VPS with the detail of Polyether
- 3) High tear strength with flexibility to get you in and out of tight places under unpredictable conditions
- 4) Predictable flow subgingivally minimizes voids and bubbles
- 5) Mild, minty taste

RESULT: Minimizes retakes, fewer adjustments to margins and ensures better fitting crowns



A world leader in dental technology.



# Accurate & Detailed Reproduction in Any Environment

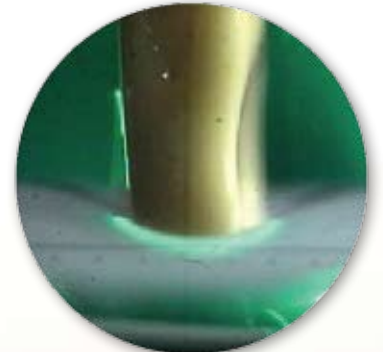
## EXA'lence™ Light Body Hydrophilic



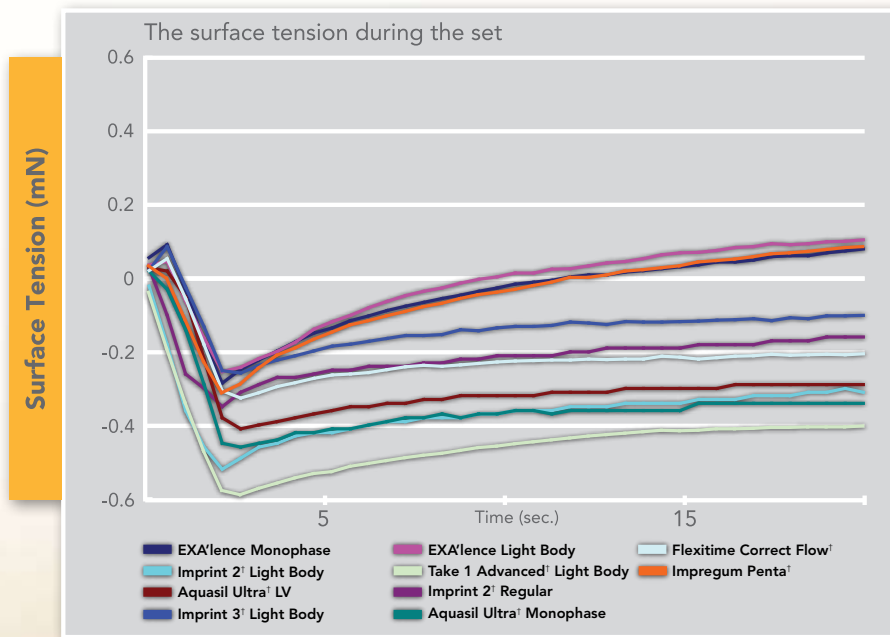
In traditional VPS materials, a surfactant is added that makes a hydrophobic material act hydrophilic. The surfactant actually leaches out when in contact with moisture, which may cause poor flow, voids or bubbles.

In our new VPES™ material, hydrophilicity occurs during the material set time, which captures all the fine detail.

## Traditional VPS Materials Hydrophobic



## Surface Tension\*



Hydrophilicity is evaluated by measuring the surface tension between the mixing material, while the material is setting, while in contact with water. As material becomes wet, the surface tension becomes lower. EXA'lence starts wet and stays wet during the most important part of the procedure - while it is being syringed into the sulcus.

## Colors (Fast or Regular Set [Fast = 1:30. Regular = 3:00])

- Extra Light Body
- Light Body
- Medium/Monophase Body
- Heavy Body
- Heavy Body Rigid

\*Test method followed ISO34. Testing data on file.

† Survey results courtesy of Focused Evolution.

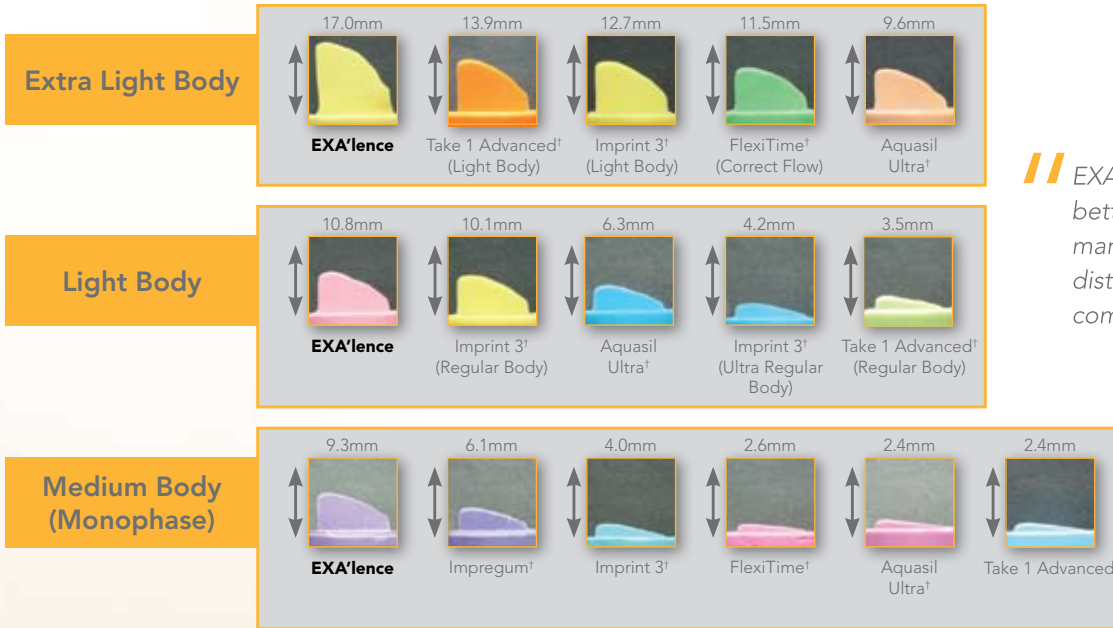
‡ Not a registered trademark of GC America Inc.

# Predictable Fit with Minimal or No Adjustments



## Flow Test\*

When margins are below the gingiva, EXA'lence™ provides superior flow.

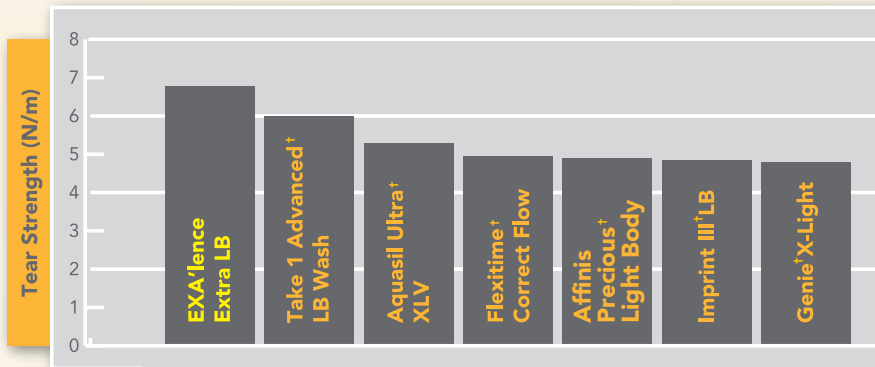


EXA'lence provided better flow, better handling, and better crown margins. The margin integrity was distinctly superior in a side-by-side comparison to Aquasil<sup>†</sup> with B4.

— Dr. Lawrence Kolar  
Chicago, IL

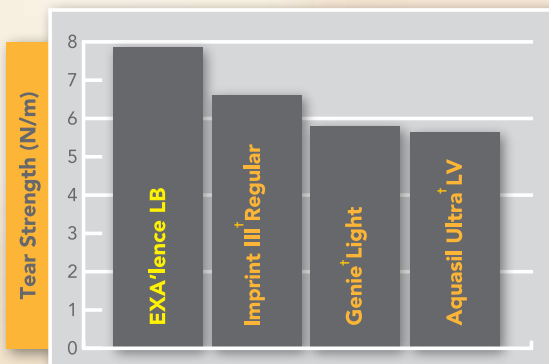
\* Testing data on file.

## Tear Strength of Extra Light Body\*



VPES provides superior elasticity with a high degree of toughness to resist tearing with no distortion.

## Tear Strength of Light Body\*



I have been loving the new impression material ... I use it on the difficult isolation areas because I know I'll get an accurate impression.

— Dr. Gregory Gillespie, Vancouver, WA

# Clinically Proven To Be The Best Choice



## For Your Practice

For dentists and dental teams that are on the path to clinical distinction, EXA'lence™ is a premium impression material that you can use in your practice that provides your solution to the challenges of producing a perfect impression. EXA'lence possesses high elasticity and tear strength, combined with constant hydrophilicity and exceptional flow – the result being one of the most accurate impressions obtainable in the market today. EXA'lence is predictable in an unpredictable environment.

*“I have been very impressed with the handling of this material. The detail in the occlusal surfaces and in the crevicular area appears clinically to be excellent. Our laboratory restorations have been outstanding and without defect. I would say this material has the potential to change the market by advancing the science of dental impression materials.”*

— **Dr. Richard Brown**, Tulsa, OK

## For Your Lab

For labs and lab technicians, EXA'lence provides an incredible level of detail that virtually eliminates retakes and provides an optimal fitting restoration. Because EXA'lence is predictably hydrophilic and provides exceptional surface tension, a master model's level of detail is more easily obtained. Every aspect of EXA'lence's unique chemistry is designed to make it the ideal material for all your lab needs.

*“EXA'lence has much sharper detail than Aquasil Ultra. The difference was quite noticeable.”*

— **Ed Larson**, Ideal Dental Lab, Chicago, IL

*“This material looks like a winner. It was easier to use than Polyether.”*

— **Dr. Brian Gagaliardi**, Canandaigua, NY

## History of Elastomeric Impression Materials

**Polysulfide**  
First Elastomeric  
Impression Material

**C-Silicones**  
Snap Set, Elasticity

**Polyether**  
Hydrophilicity

**A-Silicones (VPS)**  
Dimensional Accuracy

**VPES™**

**A NEW  
GENERATION  
IS HERE!**

A new impression material from one of the world's leaders in dental technology.

# EXA'lence

## Product Codes & Ordering Information

Use the information below to order EXA'lence today.

### EXA'lence Product Codes:

#### EXA'lence Intro Kit 48 mL FAST SET

Contains: 2 48 mL Heavy Body, 1 48 mL Extra Light Body, 1 48 mL Light Body, 6 Aqua Mixing Tips, 6 Yellow Mixing Tips and 6 Intraoral Tips

**137902** EXA'lence Intro Kit #1 Fast Set

#### EXA'lence Intro Kit 48 mL FAST SET With Dispenser

Contains: 1 48 mL Heavy Body Cartridge and 3 Aqua Mixing Tips, 1 48 mL Light Body Cartridge and 3 Yellow Mixing Tips, 3 Intraoral Tips and 1 48 mL Dispensing Gun.

**137900** EXA'lence Intro Kit Heavy Body/Extra Light Body Fast

**137901** EXA'lence Intro Kit Heavy Body/Light Body Fast

#### EXA'lence 48 mL REFILL FAST SET

Contains: 4 48 mL Cartridges and 12 Mixing Tips

**137014** EXA'lence Heavy Body Fast

**137104** EXA'lence Heavy Body Rigid Fast

**137204** EXA'lence Extra Light Body Fast

**137304** EXA'lence Light Body Fast

**137404** EXA'lence Monophase Fast

#### EXA'lence 75 mL FAST SET

Contains: 2 75 mL Cartridges and 9 Mixing Tips

**137175** EXA'lence Heavy Body Fast

#### EXA'lence 370 mL Standard FAST SET

Contains: 1 370 mL Cartridge, 10 Dynamic Mixing Tips and 1 Bayonet Locking Ring

**137370** EXA'lence Heavy Body Fast

**137519** EXA'lence Monophase Fast

#### EXA'lence 370 mL REFILL FAST SET

Contains: 2 370 mL Cartridges

**137470** EXA'lence Heavy Body Fast

**137570** EXA'lence Monophase Fast

#### EXA'lence 370 mL CLINIC PACK FAST SET

Contains: 6 370 mL Cartridges

**137864** EXA'lence Heavy Body Fast

**137865** EXA'lence Monophase Fast

#### EXA'lence Intro Kit 48 mL REGULAR SET

Contains: 2 48 mL Heavy Body, 1 48 mL Extra Light Body, 1 48 mL Light Body, 6 Aqua Mixing Tips, 6 Yellow Mixing Tips and 6 Intraoral Tips

**137402** EXA'lence Intro Kit #1 Regular Set

#### EXA'lence Intro Kit 48 mL REGULAR SET With Dispenser

Contains: 1 48 mL Heavy Body Cartridge and 3 Aqua Mixing Tips, 1 48 mL Light Body Cartridge and 3 Yellow Mixing Tips, 3 Intraoral Tips and 1 48 mL Dispensing Gun.

**137400** EXA'lence Intro Heavy Body/Extra Light Body Regular

**137401** EXA'lence Intro Heavy Body/Light Body Regular

#### EXA'lence 48 mL REFILL REGULAR SET

Contains: 4 48 mL Cartridges and 12 Mixing Tips

**137004** EXA'lence Heavy Body Regular

**137114** EXA'lence Heavy Body Rigid Regular

**137224** EXA'lence Extra Light Body Regular

**137334** EXA'lence Light Body Regular

**137444** EXA'lence Monophase Regular

#### EXA'lence 75 mL REGULAR SET

Contains: 2 75 mL Cartridges and 9 Mixing Tips

**137375** EXA'lence Heavy Body Regular

#### EXA'lence 370 mL Standard Kit REGULAR SET

Contains: 1 370 mL Cartridge, 10 Dynamic Mixing Tips and 1 Bayonet Locking Ring

**137270** EXA'lence Heavy Body Regular

**137170** EXA'lence Monophase Regular

#### EXA'lence 370 mL REFILL REGULAR SET

Contains: 2 370 mL Cartridges

**137870** EXA'lence Heavy Body Regular

**137970** EXA'lence Monophase Regular

#### EXA'lence 370 mL CLINIC PACK REGULAR SET

Contains: 6 370 mL Cartridges

**137862** EXA'lence Heavy Body Regular

**137863** EXA'lence Monophase Regular

#### EXA'lence Putty Standard

Contains: 1 278 mL Base, 1 278 mL Catalyst and 2 scoops

**137805** EXA'lence Putty Standard

#### EXA'lence Putty CLINIC PACK Standard

Contains: 5 278 mL Base, 5 278 mL Catalyst and 10 scoops

**137405** EXA'lence Putty

#### Accessories

**150004** Dynamic Mixing Tips (50 Tips) 370 mL Size

**150005** Bayonet Locking Ring (5 Tips) 370 mL Size

**153248** Mixing Tips, Aqua (48 Tips)

**159048** Mixing Tips, Yellow (48 Tips)

**150300** Intraoral Tips Yellow (100 Tips)



3737 West 127th Street  
Alsip, IL 60803  
1-800-323-7063  
www.gcamerica.com

© 2009 GC America Inc.  
SKU #601002



# EXA'lence

Breakthrough Technology



Intrinsically Hydrophilic.

EXA'lence™

Vinyl PolyEther Silicone (VPES™)  
Impression Material

